

TRAFFIC PLAN – TUESDAY, AUGUST 21, 2018 AT SITE NO. 1

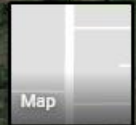
EXCAVATION SITE #1 ON WESTMORELAND RD NORTH OF BEAR CREEK ROAD

ALL OUTBOUND TRAFFIC FROM RIVER RUN DRIVE MUST HEAD NORTH TOWARDS DESOTO

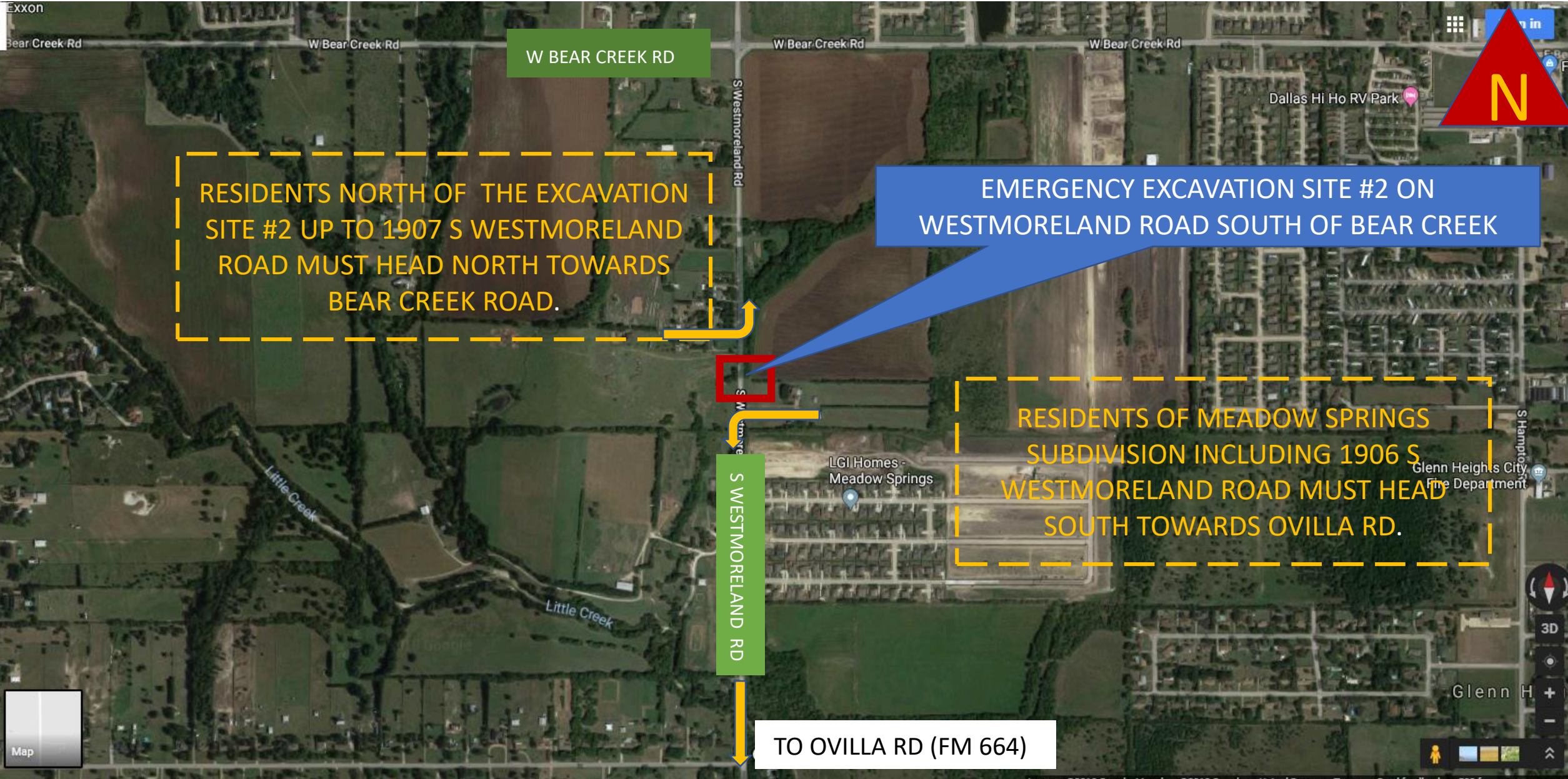


ALL OUTBOUND TRAFFIC FROM BAYOU/WYNNEWOOD DRIVE MUST HEAD SOUTH TOWARDS BEAR CREEK ROAD

TO BEAR CREEK ROAD



TRAFFIC PLAN – WEDNESDAY, AUGUST 22, 2018 AT SITE NO. 2



RESIDENTS NORTH OF THE EXCAVATION SITE #2 UP TO 1907 S WESTMORELAND ROAD MUST HEAD NORTH TOWARDS BEAR CREEK ROAD.

EMERGENCY EXCAVATION SITE #2 ON WESTMORELAND ROAD SOUTH OF BEAR CREEK

RESIDENTS OF MEADOW SPRINGS SUBDIVISION INCLUDING 1906 S WESTMORELAND ROAD MUST HEAD SOUTH TOWARDS OVILLA RD.

S WESTMORELAND RD

TO OVILLA RD (FM 664)

